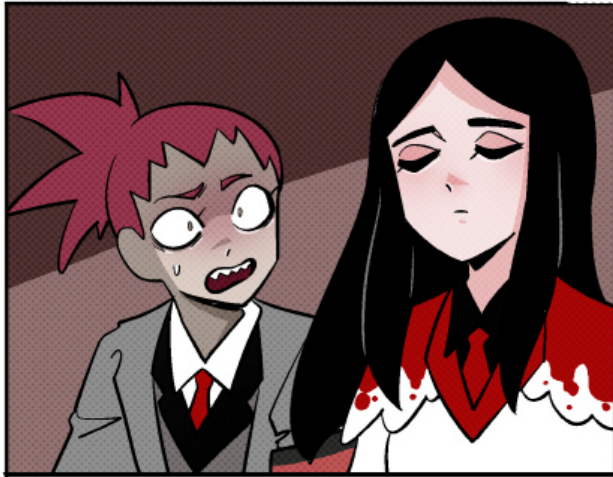
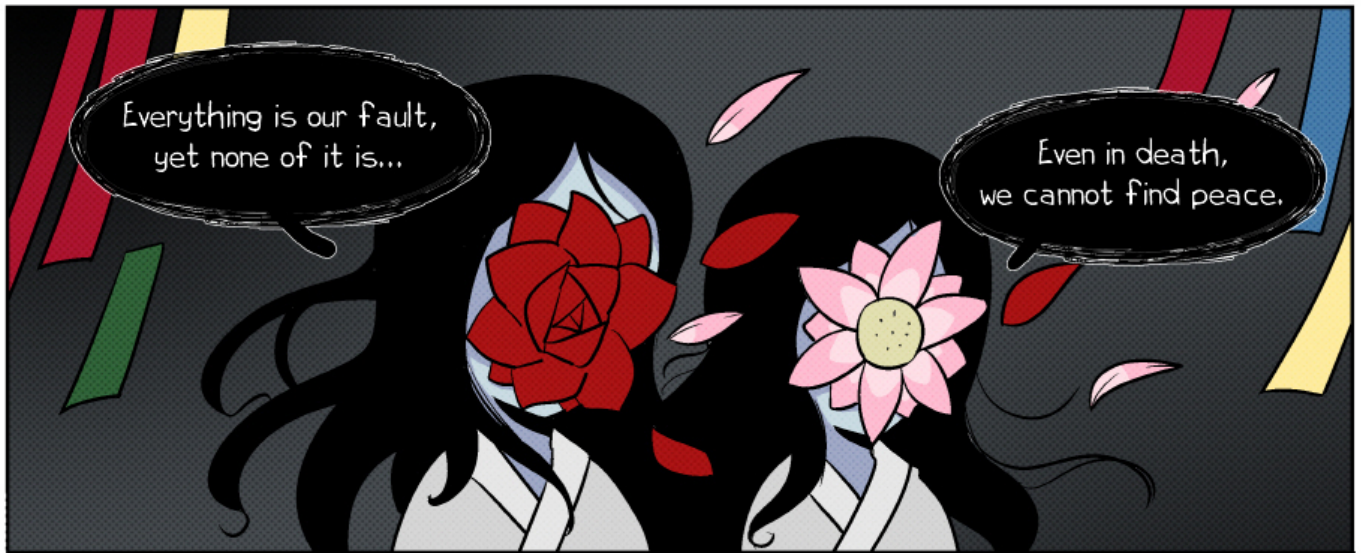
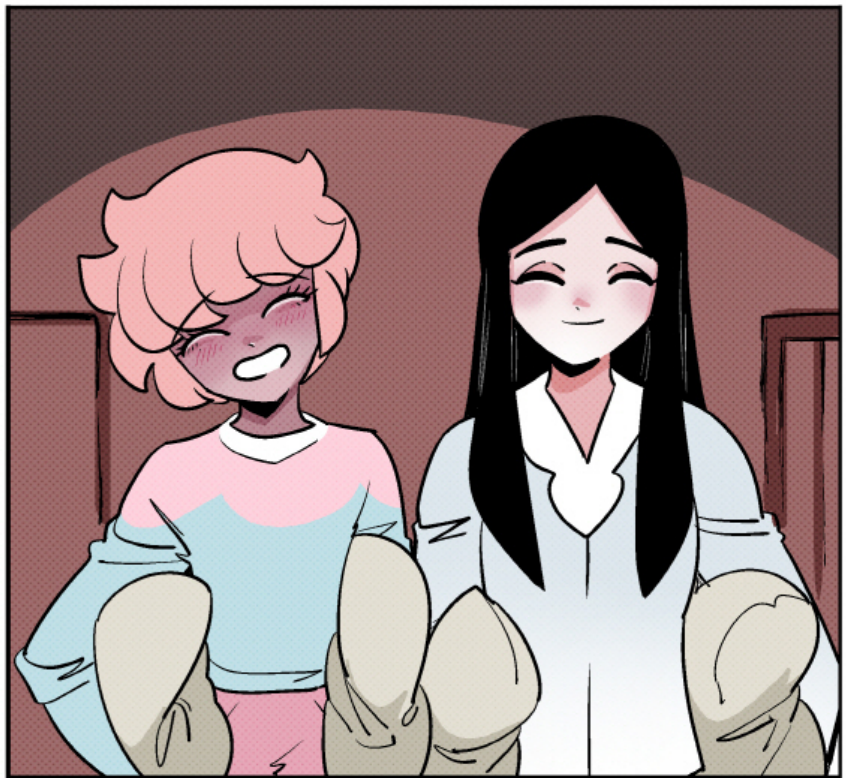
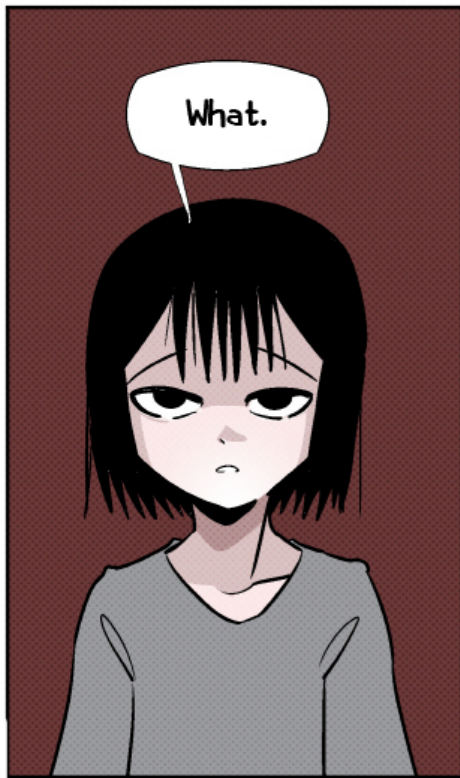


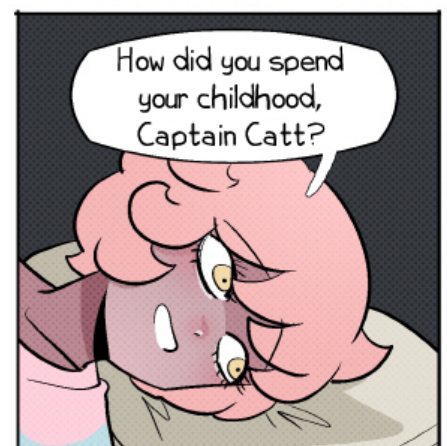
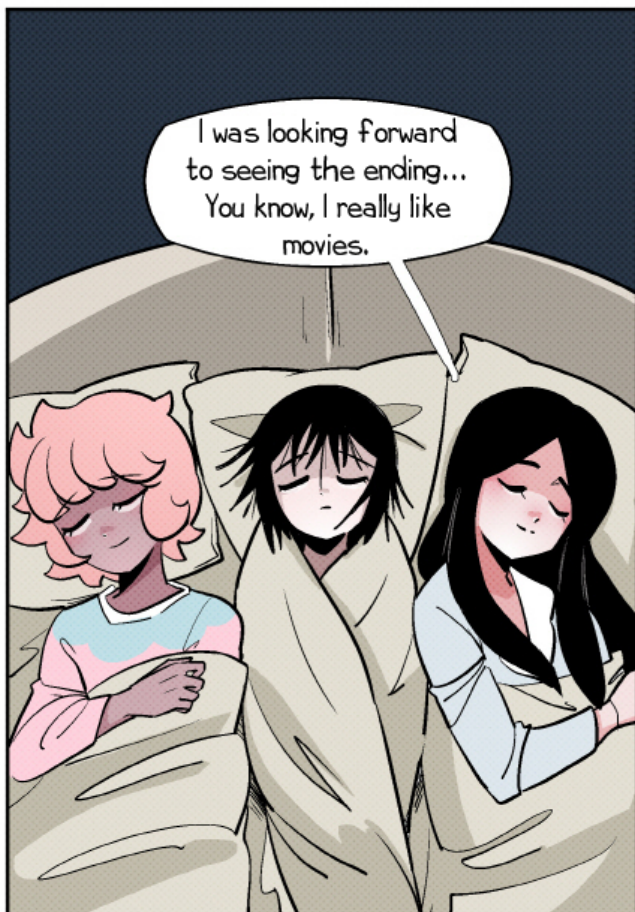
Han (한/恨) is an emotional concept unique to Korean culture, considered to be a key part of Korean identity. Han is considered untranslatable into English, with words such as "resentment", "hatred", "regret", "sorrow", "pain", and others being used to approximate around the emotions that are involved with it. There are also associations of "loss of identity", "virtuous endurance of injustice", and "holding/avenging a grudge".

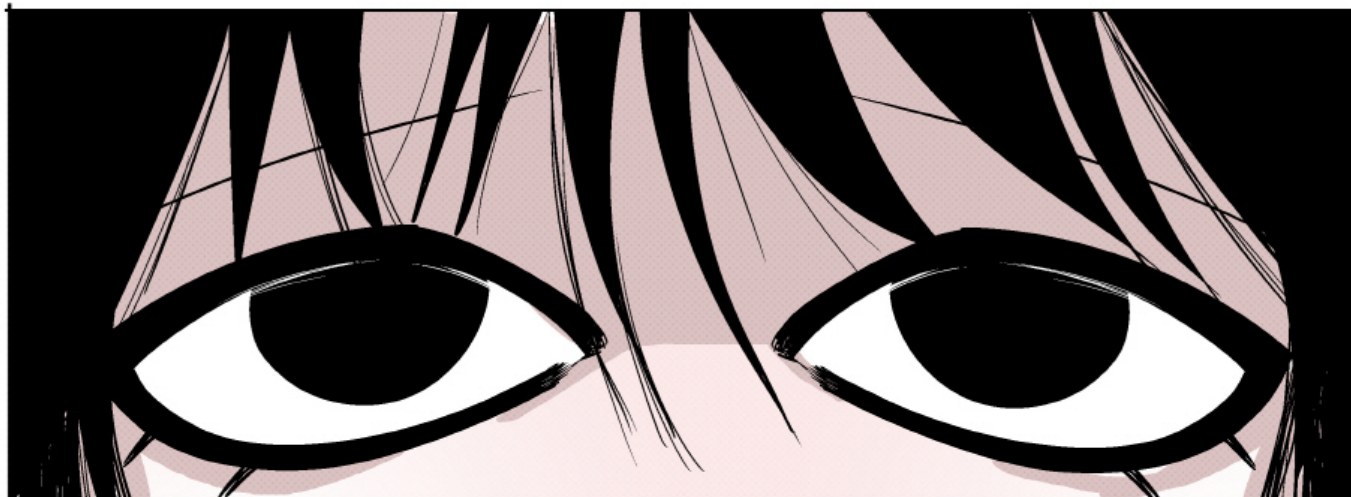
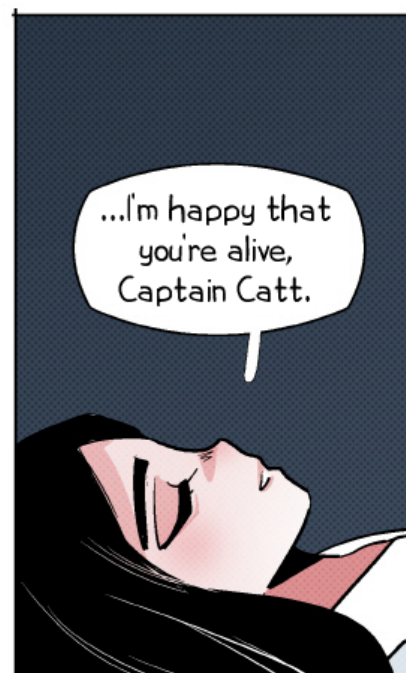
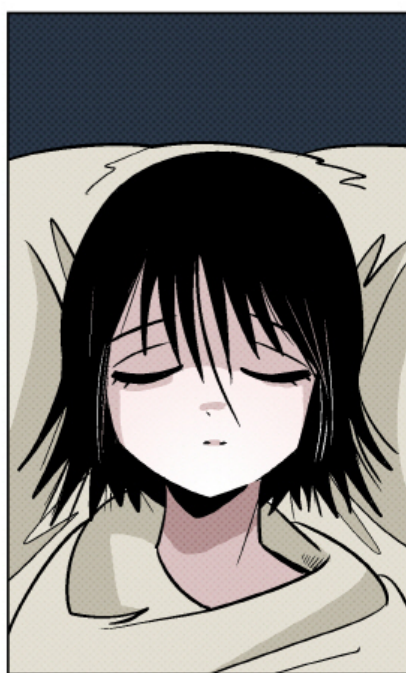


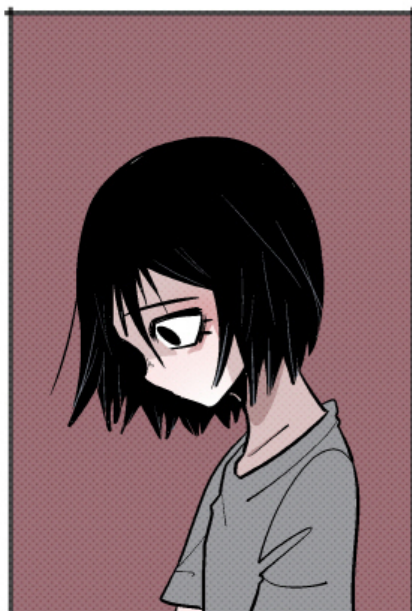
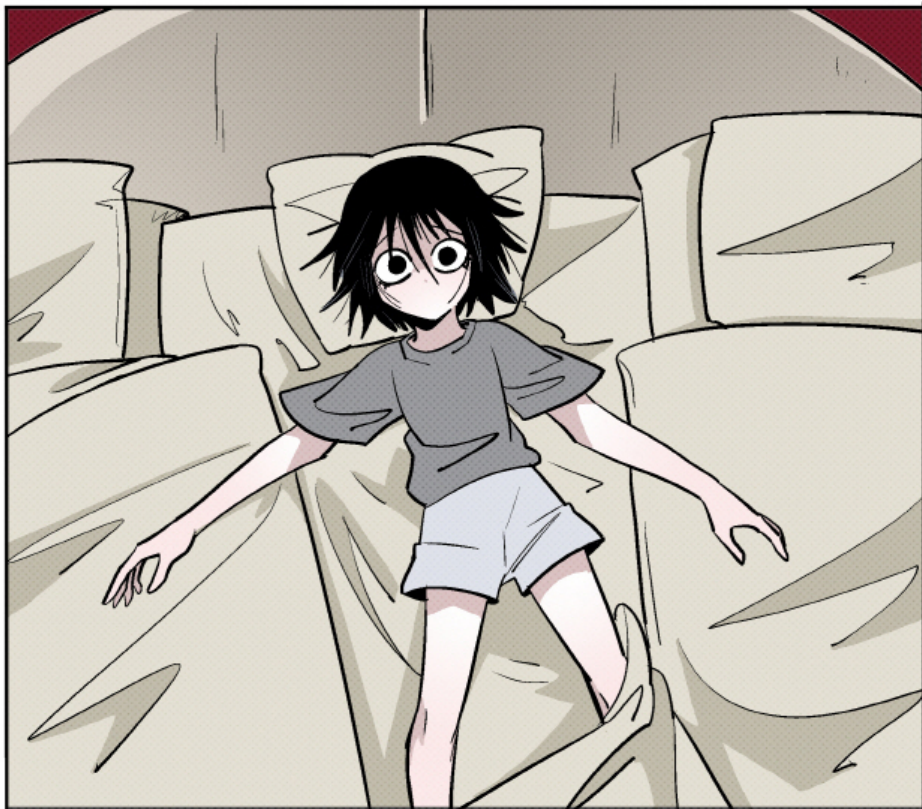












NEXT